

Civic *Music* Concerts
Lakeland Community College
presents

The Lakeland Civic Chorus

Director Charles Eversole

"Strength in Community"

The concert will examine
our individual
and group strengths
and will feature works by
Gabriel Faure,
Leonard Bernstein,
Sammy Fain,
Jean Racine,
Stephen Sondheim,
Martin Luther,
and others.



Arts
at
Lakeland

Sunday,
Oct. 24, 2021
4 p.m.

Dr. Wayne L. Rodehorst Performing Arts Center in D-Building at
Lakeland Community College, 7700 Clocktower Drive, Kirtland, Ohio 44094

9-21 bc (12332)



Arts at Lakeland

A *rtistic*

R *hythm*

T *heatrical*

Creativity,
the soul
of the arts,
is given
ample
outlet at
Lakeland
Community
College

Discover the Arts at Lakeland



Arts at Lakeland

Mission Statement

*“To provide
a learning environment
that fosters
aesthetic literacy
and expressive capability
through the cultivation
of artistic techniques and skills
and the exploration
of creative traditions
and possibilities.”*



Civic Performance Program

Lakeland Community College provides talented community members with many opportunities for expressing their artistic abilities in the performing arts. The college's civic performance program, which is a part of the Arts and Sciences Division, offers community members a theater program and music groups through which they can express and advance their talents. The college's five music groups include the Lakeland Civic Orchestra, Lakeland Civic Band, Lakeland Civic Chorus, Lakeland Civic Jazz Orchestra and Lakeland Civic Flute Choir. Additionally, the college offers talented high school students Jazz Impact, an all-star high school music group. The Lakeland Civic Theatre program offers community members the opportunity to perform in or work backstage on several productions each year. The groups and their directors are listed below:

Lakeland Civic Band

Director, Daniel D. Crain

Lakeland Civic Chorus

Director, Charles Eversole

Lakeland Jazz Impact

Director, Ed Michaels

Lakeland Civic Jazz Orchestra

Director, Ed Michaels

Lakeland Civic Orchestra

Director, Dr. Matthew Saunders

Lakeland Civic Flute Choir

Director, Judith Elias

Lakeland Civic Theatre

Director, Dr. Martin Friedman

If you would like to obtain additional information on or to audition for these civic groups contact Jeri Lynn Pilarczyk at the Arts and Sciences Division:
phone 440.525.7261 or email jpilarczyk5@lakelandcc.edu.

The Lakeland Civic Chorus

Charles Eversole, conductor

“Strength in Community”

PROGRAM

“All Earth’s Children” words based on a poem by Louise Phillips
music by Charles Eversole

“This Could Be the Start of Something Big” words and music by Steve Allen

“Cantique de Jean Racine” words by Jean Racine, music by Gabriel Fauré

“Somewhere” from “West Side Story” words by Stephen Sondheim
music by Leonard Bernstein

“Come in From the Rain” words and music by Melissa Manchester
and Carole Bayer Sager

“A Mighty Fortress Is Our God” words and music by Martin Luther

“I’ll Be Seeing You” words by Irving Kahal, music by Sammy Fain

“You Will Be Found” from “Dear Evan Hansen” words and music by Benj Pasek
and Justin Paul

•• THERE IS NO INTERMISSION ••

DIRECTOR

CHARLES EVERSOLE, Director of the Lakeland Civic Chorus holds the Master of Music degree from The University of Michigan and the Bachelor of Music degree from Baldwin Wallace Conservatory. He has taught at New York University's CAP21 Studio and the American Musical and Dramatic Academy in NYC, and locally at Cuyahoga Community College. For 15 years, Charles served as artistic director of The Singing Angels. His anthem "All Earth's Children," originally written as the official song of the National Park Service Centennial, is available through Carl Fischer Music. He is also a private vocal teacher and coach and has served as musical director for over 50 productions nationwide.

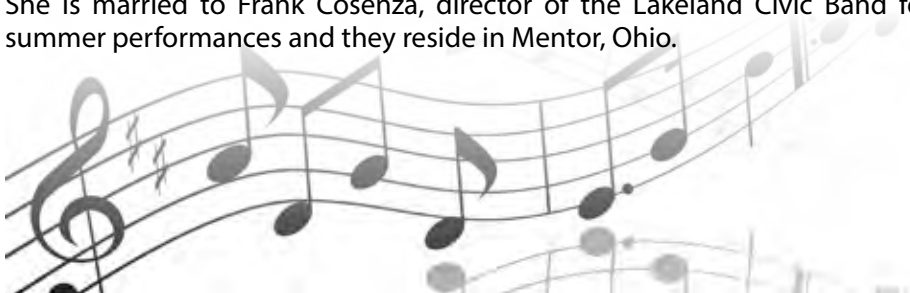
ACCOMPANIST



TERESA TOOMEY COSENZA is in her first year as accompanist for the civic chorus. She is also a member of the Lakeland Civic Band for summer performances since 2018, where she plays trombone. Teresa was a music educator for 30 years. She retired in 2017 from West Geauga Local Schools, where she served as the assistant band director since 1993, teaching instrumental music grades five through 12.

Since retiring, Cosenza has been working as a freelance musician on both trombone and as a piano accompanist. As a member of the Ohio Music Educators Association, Cosenza has served as an adjudicator for OMEA sponsored solo and ensemble events. In addition, she has served as the performance group coordinator for the OMEA Professional Development conferences since 2018. She is also a member and trustee of Windjammers Unlimited, whose mission is to preserve traditional music of the circus. Besides playing trombone at their conventions, she is one of the conductors and is a member of the Conductors' Committee.

Cosenza holds a Bachelor of Music Education degree from Bowling Green State University with a double major in piano and trombone and a Masters of Music from The University Akron. She is the mother of a daughter and son, Maria and Frank, and is the grandmother of a handsome baby boy, Hudson. She is married to Frank Cosenza, director of the Lakeland Civic Band for summer performances and they reside in Mentor, Ohio.



The 2021-2022 Lakeland Community College Civic Chorus

Charles Eversole, director

Teresa Toomey Cosenza, accompanist

SOPRANO 1

Heidi Edder

Cindy Gressley

Tara Jarosz

Rachael Kureti

Mary Wynne-Peaspanen

ALTO 1

Jane Eslinger

Ginny Oatman

Judy Willour

TENOR 1

Keven Quinlan

Jan Robinson

TENOR 2

Gerald Kadis

SOPRANO 2

Machala Comenschek*

Jean Haverstraw

Agnes Mullett

Shirley Ivancic Stall

ALTO 2

Mary Chiriboga

Chloe Gregory

Ridge Karr

Michelle Mullett

BASS 1

Trem Oatman

Adam Pysell*

BASS 2

Liam Browne

Peter B. Clausen

Eli Funk

Harold Meier



* denotes assistant
conductor

PROGRAM NOTES

"All Earth's Children" was performed at over 100 national parks and historic sites as part of the U.S. National Park Service Centennial celebrations in 2016. Youth organizations, children's choruses, and high school and collegiate ensembles participated in the national initiative to celebrate our National Park system through song, culminating in "An Evening at the Arch" at Roosevelt Arch in Yellowstone National Park in August 2016.

This anthem was composed by Lakeland Civic Chorus director Charles Eversole, to a poem by Louise Phillips. He composed it while artistic director of The Singing Angels, who were asked to sing not only at Cuyahoga Valley National Park locally, but also at Grand Teton and Yellowstone National Parks for their centennial celebrations.

It is published by Carl Fischer Music; the dedication reads: Dedicated to The Singing Angels, Cleveland, OH in honor of their performances at the 2016 U.S. National Park Service Centennial Celebrations.

DIRECTOR'S NOTES

*"So let that lonely feeling wash away,
'Cause maybe there's a reason to believe you'll be okay.
'Cause when you don't feel strong enough to stand
You can reach, reach out your hand.
And oh, someone will come runnin'
And I know they'll take you home."*

These lyrics from our closing selection at today's performance, "You Will Be Found," have been and continue to be an important message to many impacted by our recent (and perhaps upcoming) periods of quarantine.

The further lyric, repeated later in the song, "You are not alone," is crucial to many of us as well. Because, we HAVE been alone in many senses of the word, isolated from friends, family, and community. **"Strength in Community"** allows us an opportunity to have faith in these lyrics. For the first time in over a year, we are able to gather to visit, to work together... to sing.

From "Cantique de Jean Racine":

*"From slumber waken us, our weary souls reviving
Renewed by Thy gifts may (we) go forth in peace."*

From "A Mighty Fortress Is Our God":

*"We tremble not, unmoved we stand,
They cannot overpower us."*

From "Somewhere":

*"There's a place for us
Somewhere a place for us.
Peace and quiet and open air
Wait for us somewhere."*

May we continue to be able to channel strength, empathy,
caring and love from our family, friends, co-workers, fellow
choristers - our **COMMUNITY**.

— Charles Eversole

Acknowledgements

*We would like to extend our sincerest gratitude to all those
who helped make our performance possible:*

Dr. Morris Beverage, President, Lakeland Community College

Dr. Laura C. Barnard, Executive Vice President & Provost

Dr. Adam Cloutier, Dean for Arts and Sciences Division

Dr. Matthew Saunders, Department Chair, Music

Ms. Jeri Lynn Pilarczyk, Senior Secretary, Arts and Sciences Division

Craig Tucker, Technical Director

Lakeland Community College Production Center

Lakeland Community College Maintenance and Facilities

Thank you to Jodi Fletcher and Family for their generous support
of the Lakeland Civic Band and the Lakeland Civic Chorus.

Make Music at Lakeland



Miss making music?

Always wanted to learn to play or sing?

Lakeland's music department has something for you!

Love to perform?

Audition for our civic music ensembles.
Two years of high school experience recommended.
Contact the director for information.

Lakeland Civic Flute Choir – MUSC 2730

Judith Elias: jelias1@lakelandcc.edu

Lakeland Civic Chorus – MUSC 2750

Charles Eversole: ceversole2@lakelandcc.edu

Lakeland Civic Orchestra – MUSC 2850

Dr. Matthew Saunders: msaunders4@lakelandcc.edu

Lakeland Civic Band – MUSC 2890

Daniel Crain: dcrain1@lakelandcc.edu

Lakeland Civic Jazz Orchestra – MUSC 2895

David Sterner: dsterner@lakelandcc.edu

In a band?

Get coaching with Small-Group Music, MUSC 2700.
Contact Dr. Matthew Saunders at
msaunders4@lakelandcc.edu for details.

Starting from scratch?

Try our one-credit group music courses. No experience necessary.

Group Voice – MUSC 1000 • Group Guitar 1 – MUSC 1030

Group Piano 1 – MUSC 1050

Pursuing your passion?

Continue your study privately with applied music lessons.
(MUSC 1251 – MUSC 1271)

Just Love to Listen?

Our ensembles present six concerts
throughout the semester in the
Dr. Wayne L. Rodehorst Performing Arts Center.

Arts
at
Lakeland



Artistic

Art Exhibits
The Gallery at Lakeland

Sept. 23 – Nov. 5, 2021

"The Skull and Skeleton in Art VII: Folk Art to Pop Culture"

Curated by Mary Urbas

Costume Party/Artist Reception/Boneyard Market Oct. 28, 2021, 6-9 p.m.

Nov. 18, 2021 – Feb. 4, 2022

"Lakeland Community College Visual Arts Faculty Exhibition"

Artist Reception Nov. 18, 2021, 7-9 p.m.

Musical performance by the FAC-PAC.

College closed Dec. 23, 2021 – Jan. 2, 2022 and Jan. 17, 2022

Feb. 20 – April 1, 2022

**"Celebrate Women's History Month – from WOMAN XV...
Created by women, of women and about women"**

Curated by Mary Urbas

Artist Reception March 13, 2022, 3:30-5 p.m.

Women of Achievement Awards: Sunday, March 13, 2022, 2 p.m.

April 10 – May 4, 2022

"Lakeland Community College Visual Arts Student Exhibition"

Artist Reception and Awards Ceremony April 28, 2022, 7-9 p.m.

Awards presented at 7:30 p.m. Reception to follow.

May 19 – July 15, 2022

"12th May Show at Lakeland Juried Art Exhibition"

Artist Reception and Awards Ceremony May 20, 2022, 6-9 p.m.

Awards presented at 7 p.m. Reception to follow.

Visit lakelandcc.edu/gallery for more information and entry forms.

The Gallery at Lakeland is located in the D-Building on the first floor. All gallery exhibitions are free and open to the public. Group gallery tours are available by appointment.

Please contact Mary Urbas, gallery coordinator, at 440.525.7029 or murbas@lakelandcc.edu.

For more information about the exhibit, visit lakelandcc.edu/gallery.

GALLERY HOURS:

Monday - Friday, 9 a.m. - 9 p.m. Saturday, 9 a.m. - 5 p.m. Sunday, Closed



Rhythmic

Civic Music Concerts

Dr. Wayne L. Rodehorst
Performing Arts Center

Oct. 17, 2021, 4 p.m.

Lakeland Civic Band, Director Daniel Crain presents

"Road Trip: A Musical Journey Across North America"

Oct. 24, 2021, 4 p.m.

Lakeland Civic Chorus, Director Charles Eversole presents

"Strength in Community"

Nov. 7, 2021, 4 p.m.

Lakeland Civic Orchestra, Director Dr. Matthew Saunders presents

"Orchestral Homecoming"

Special guest Moshi Tang,

Senior Division Winner of the 2021 Young Artists Concerto Competition

Nov. 14, 2021, 4 p.m.

Lakeland Civic Jazz Orchestra and Lakeland Jazz Impact, Director Ed Michaels presents

**"A Tribute to the Music of Sammy Nestico
and the Great American Songbook"**

Featuring vocalist Debbie Gifford

Nov. 21, 2021, 4 p.m.

Lakeland Civic Band, Director Daniel Crain presents

"Passport to Europe"

Dec. 3, 2021, 7 p.m.

Lakeland Civic Flute Choir, Director Judith Elias presents

"Tis the Season"

Featuring pianist Dr. Robert L. Brown, Professor Emeritus Lakeland Community College

Dec. 5, 2021, 4 p.m.

Lakeland Civic Chorus, Director Charles Eversole presents

"Holiday Gifts"

Feb. 27, 2022, 4 p.m.

Lakeland Civic Band, Director Daniel Crain presents

"Ocean Voyage: Music of the Sea"

March 6, 2022, 4 p.m.

Lakeland Civic Orchestra, Director Dr. Matthew Saunders presents

"A Family Affair"

Special guests Rosabelle and Richelle Shi,

Senior and Junior Division Winners of the 2021 Young Artists Concerto Competition

April 10, 2022, 4 p.m.

Lakeland Civic Chorus, Director Charles Eversole presents

"April Showers of Song"

April 24, 2022, 4 p.m.

Lakeland Civic Orchestra and Lakeland Civic Band,

Director Dr. Matthew Saunders and Director Daniel Crain present

"Musical Collage"

Featuring flutist Judith Elias, director of the Lakeland Civic Flute Choir

May 1, 2022, 4 p.m.

Lakeland Civic Jazz Orchestra and Lakeland Jazz Impact, Director Ed Michaels presents

"A Salute to the Cleveland Jazz Orchestra"

May 6, 2022, 7 p.m.

Lakeland Civic Flute Choir, Director Judith Elias presents

"Night Across the Lands"

*Featuring a special performance of Dr. Matthew Saunders' "Nod a Don"
and guest conductor Michael J. Elias*

Ticket purchases to all Arts at Lakeland events
are available online only at lakelandcc.edu/arts.

Bring your electronic ticket to show at the door.

Tickets: \$7 adults, \$6 seniors and veterans, \$2 students



Theatrical

Civic Theatre Performances

*Dr. Wayne L. Rodehorst
Performing Arts Center*

Director Dr. Martin Friedman presents:

"Assassins"

Music and Lyrics by Stephen Sondheim

Book by John Weidman

This sinisterly humorous musical revue takes a journey through the dark side of the American dream, as it explores the lives of nine people who either killed (or tried to kill) one of the Presidents of the United States.

Post-play discussions will be hosted by Greg Truhan, Lakeland professor and program director for the criminal justice program, former police officer and retired senior special agent with the United States Secret Service (USSS).

Tony Award-winning play.

Feb. 4, 5, 11, 12, 18 and 19 at 7:30 p.m.

Feb. 6, 13, 20 at 2 p.m.

Tickets are available for online purchase only at lakelandcc.edu/arts.
Bring your electronic ticket to show at the door.

Theater performance tickets are: \$15 adults, \$12 seniors and veterans, and \$7 students.

For mature audiences.

See the world through a whole new lens.



1-20 bc (11610)

Lakeland Community College offers classes in graphic design and photography where you can earn an Associate of Applied Business degree in graphic design or a graphic design for the web or photography certificate.

Lakeland
COMMUNITY COLLEGE

**To learn more
about these programs, contact:**

Professor Amy D. Copeland at

440.525.7046 or acopeland4@lakelandcc.edu

Photography Lab Coordinator Wade Gagich at 440.525.7283 or wgagich2@lakelandcc.edu

Explore the world of theater



Lakeland Community College offers theater classes that can introduce you to or advance your study of acting, directing, playwriting, stagecraft, lighting and sound. You'll learn basic concepts and techniques to character creation and set design. You can even participate in theater performances produced by the college.

To learn more, contact Dr. Matthew Saunders at msaunders4@lakelandcc.edu or call 440.525.7105.

Arts
at
Lakeland

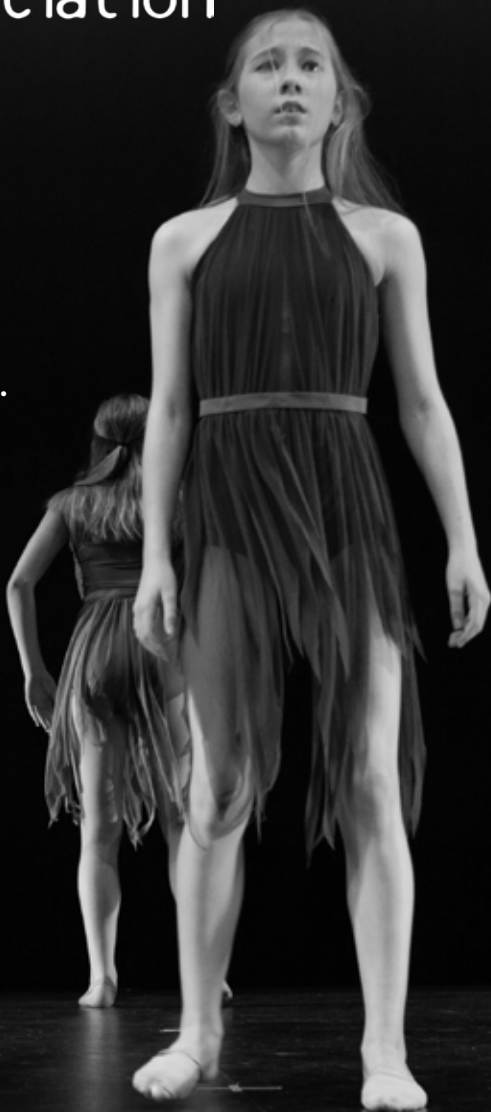
Lakeland
COMMUNITY COLLEGE



**fine arts
association**

**Guided by the values of
Equity, Integrity,
Growth, and
Community, The Fine
Arts Association seeks
to Create and Discover
Beauty to foster a
Community
Empowered by the Arts.**

- **Classes, sessions,
and workshops in
dance, music,
theatre, visual arts,
and creative arts
therapies**
- **Private music
lessons**
- **Theatre
performances**
- **Concerts**
- **Recitals**
- **Cultural activities**



**38660 MENTOR AVE, WILLOUGHBY, OH 44094
440-951-7500 | FINEARTSASSOCIATION.ORG**

The Lakeland Civic Chorus Fund of



Contribution amount \$ _____

Please print your name as you would like it to appear in the program:

Living Gifts

You may wish to dedicate a gift in honor of a special person or occasion,
or in memory of a loved one.

(Examples:)

*Mr. & Mrs. John Smith in honor of their daughter Mary's 2013 Graduation
with an A.A. in education from Lakeland Community College;*

Mr. Joseph Davis in memory of his uncle, Robert Davis

If so, please print your dedication as you wish it to appear in the program:

Your donation is tax deductible as allowed by law.

Your donation may be made out and sent to:

The Lakeland Foundation, Civic Chorus Fund
7700 Clocktower Drive, Kirtland, OH 44094

440.525.7094 • Fax: 440.525.7601 • lccfoundation@lakelandcc.edu

Or you may make an online donation at lakelandcc.edu.

Many area employers offer Matching Gifts programs.
Please consult your human resources department for details.

Thank you for your support!



UNLEASH YOUR CREATIVITY!

*Art Drawing | Ceramics | Jewelry/Metals
Painting | Sculpture*


**For more information on
classes, contact**

Professor Christopher Berry
at cberry@lakelandcc.edu or
call 440.525.7191

or **Professor Derek O'Brien**
at dobrien@lakelandcc.edu or
call 440.525.7442.

Arts
at
Lakeland

Get started on your education!



Begin your college career at Lakeland Community College and receive a quality education at an affordable price. Earn an associate degree or take classes that will easily transfer to most four-year colleges and universities.

See how much you can save at
lakelandcc.edu/2plus2calculator.


Visit **lakelandcc.edu** and begin your journey today!

Opportunity
starts **HERE**

Continue your education conveniently and affordably at Lakeland Community College's Holden University Center. Complete a bachelor's or graduate degree from a variety of leading colleges or universities, right here in Lake County.

Visit **lakelandcc.edu/uc** for more information.

Lakeland
COMMUNITY COLLEGE
HOLDEN UNIVERSITY CENTER



Stay **HERE**.
Go far!