

LAKELAND

COMMUNITY COLLEGE

2010-2011

annual report



 Opportunity
starts **HERE**
www.lakelandcc.edu
1-800-589-8520

A message from the President



As we ventured into our 44th year of providing learning opportunities for our community, it is helpful to be reminded of why we exist and what relevance we have in the lives of those who come here. For over four decades, we've provided opportunities that have changed lives through learning.

I have often thought that if Lakeland didn't exist, we would have to build it.

But Lakeland does exist, and by existing, it is impacting lives, but not only through learning. In 1965 Lake County residents voted to start a community college. In 1967 they voted to provide the necessary financial support for this college to begin. Construction of the campus began soon thereafter, and in the fall of 1971, the college opened its doors for the first time on the Kirtland campus.

Today, it is almost impossible to imagine what would have happened if those doors had not opened that fall. Our community would have had to create something to fulfill this need. What's the proof? Well, the more than 25,000 degrees awarded over the last four decades is quite telling.

For many families, Lakeland is the best, most convenient and affordable option to receive a high-quality education. Others come to Lakeland to update their skills and remain competitive in their fields. There are countless other ways in which this college affects the people of our community, as you'll see highlighted in this report.

Our community has shown an appreciation for the value of a degree. They realize the worth of having Lakeland in their backyard and the needs that it fulfills across the regional spectrum — from generations of families that come here, to businesses and industries, from K-12 school children to the job seekers. Our impact can't simply be measured by college degrees alone.

Thanks to the great people of Lake County, students will continue to receive an educational foundation for years to come.

A handwritten signature in black ink, appearing to read "Morris Beverage Jr.", written in a cursive style.

DR. MORRIS W. BEVERAGE JR.
President, Lakeland Community College
Lakeland Class of 1974



Making a College Education Accessible

- Lakeland's tuition continues to be one of the lowest in the state – about one-third the cost of most four-year colleges and universities. Lakeland enrolled a record high of 9,866 students for fall 2010.
- Lakeland served a total of 13,967* credit students during the 2010-2011 academic year. (*unduplicated head count for both fall and spring semesters combined)
- Fall credit enrollment increased by 4.4 percent. Credit hours delivered increased by 3.8 percent.
- Post-Secondary Enrollment Option (PSEO) increased 10.8 percent, and now represents 7.1 percent of our student population.
- Nearly 45 percent of Lakeland students received financial aid in 2010-2011.
- The Lakeland Foundation kicked off the IMAGINE event aimed at raising money for student scholarships and faculty development. For the fiscal year ending June 30, 2011, the Foundation distributed over \$339,000 in aid to students. Since 1997, the Foundation has given over \$3 million in student scholarships.
- Lakeland increased accessibility to bachelor's and graduate degrees by developing the Arlene and Arthur Holden University Center. The program was created in response to county residents who said partnerships with four-year universities, allowing students to earn a four-year degree in Lake County, should be a high priority for Lakeland.

Providing Quality Academic Programs

- Lakeland takes part in the Academic Quality Improvement Program (AQIP) to maintain its accreditation. The program serves as an independent compass that points the college toward continual improvement. This results in the implementation of several action projects throughout the year that aim to improve the quality of students' learning experiences.
- Lakeland's College Tech Prep program enrolled 273 students for the 2010-2011 year. The two-year program for junior and senior high school students blends college academic coursework with applied learning in a technical field. Students in the program earn college credit for their high school coursework, which allows them the opportunity to continue their education through to an associate degree and beyond.
 - A Strategic Plan was developed to act as a guide for the decisions that the college makes at all levels. The plan serves to direct college leadership to the items that must be given top priority and attention. This helps to ensure that the college maintains compliance with accreditation requirements from the Higher Learning Commission and the Academic Quality Improvement Program (AQIP).
 - The Degree Tracking Center was launched to give students access to their academic records, helping them become active participants in planning their college career. Students utilize the tool to see how additions or deletions of classes will affect the time it will take them to finish their degree.
 - The voters of Lake County passed a 1.7 mill replacement levy in November 2010. The issue replaced the original levy that first passed in 1967 and was never adjusted for inflation. Passage of the levy allows the college to keep tuition affordable, provide classrooms and labs so that students are not turned away, and offer bachelor's and graduate degrees from leading colleges and universities through a university center in Lake County.

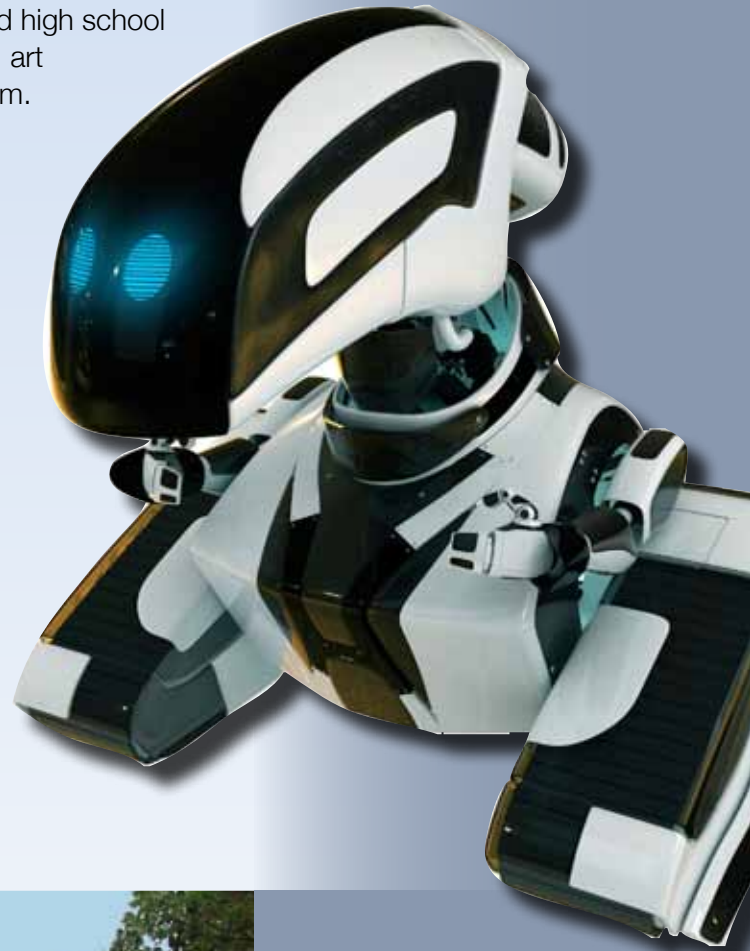


Enriching Lives Outside the Traditional Classroom

- Continuing Education provided 880 courses, ranging from professional development to lifelong learning, to 5,690 participants.
- Summer youth programs provided over 500 children ages 4 -18 with a variety of summer day camps, sports camps, prep classes, leisure programs, and certification programs.
- Lakeland's Center for International Education held the Eighth Annual International Folk Festival of Lake County which spotlighted the global community through ethnic music and dance performances.
- The division of Arts & Humanities hosted the 39th Annual Lakeland Jazz Festival which featured a region-wide jazz competition for middle and high school students. The division also presented theatrical productions, art exhibits, concerts, and the Eighth Annual Comics Symposium.

Workforce and Professional Development

- The Center for Business & Industry provided customized training to more than 1,026 employees from 35 local businesses.
- Lakeland's Nonprofit and Public Service Center provided professional development workshops and customized consulting services for many nonprofit and public sector organizations.
- Lakeland's partnership with the Alliance for Working Together (AWT) brought local high schools and manufacturing companies to Lakeland's Athletic and Fitness Center for the inaugural "Robobots" robotics competition aimed at encouraging students to pursue careers in manufacturing.



Achieving Success

- Lakeland mathematics instructor Ivana Gorgievska received the college's Diversity Award for her continuing efforts to bring awareness to international cultures through events such as the International Folk Festival.
- Lakeland alumni inducted into the Alumni Hall of Fame in 2011 were: Jo Howell '72, owner, Create-A-Frame & Gallery; R. Richard Peterson '77, vice president of business development, Astro Manufacturing and Design; Jane Densmore Steger '85, owner, JDS Connects, LLC; Tammy Joy Stennis '99, administrator, Department of Veterans Affairs; and Jeff Sudbrook '83, senior publisher, *The News-Herald*.
- William Armstrong, associate professor of mathematics, and Kathy Ertter, associate professor of medical laboratory technology, received the college's Excellence in Teaching Award. Part-time instructors Keith Kallay, accounting, and Craig Semsel, history, were also honored.
- Lakeland presented its 2011 Distinguished Service Awards to: (Community) Arlene M. Holden, civic leader for whom, along with her late husband and Lakeland founder, Arthur, the Holden University Center of Lakeland Community College was named; (Student) Christa Parisi '11; (Faculty) Dr. Kenneth M. Browner, campus psychologist; and (Staff) Dr. Fred Law, executive vice president and provost and dean of faculty.
- A total of 912 students received degrees at the 44th annual commencement which featured keynote speaker Eric D. Fingerhut. Mr. Fingerhut was appointed the seventh chancellor of the Ohio Board of Regents, and served for four years.

Student Profile

Fall 2010 Student Profile

Total enrollment

Women	59.2%
Men	40.8%
Full-time students	41.9%
Part-time students	58.1%

Students by age

17 & under	7.1%
18-21	32.4%
22-24	12.6%
25-30	16.7%
31-39	13.3%
40 & over	17.7%

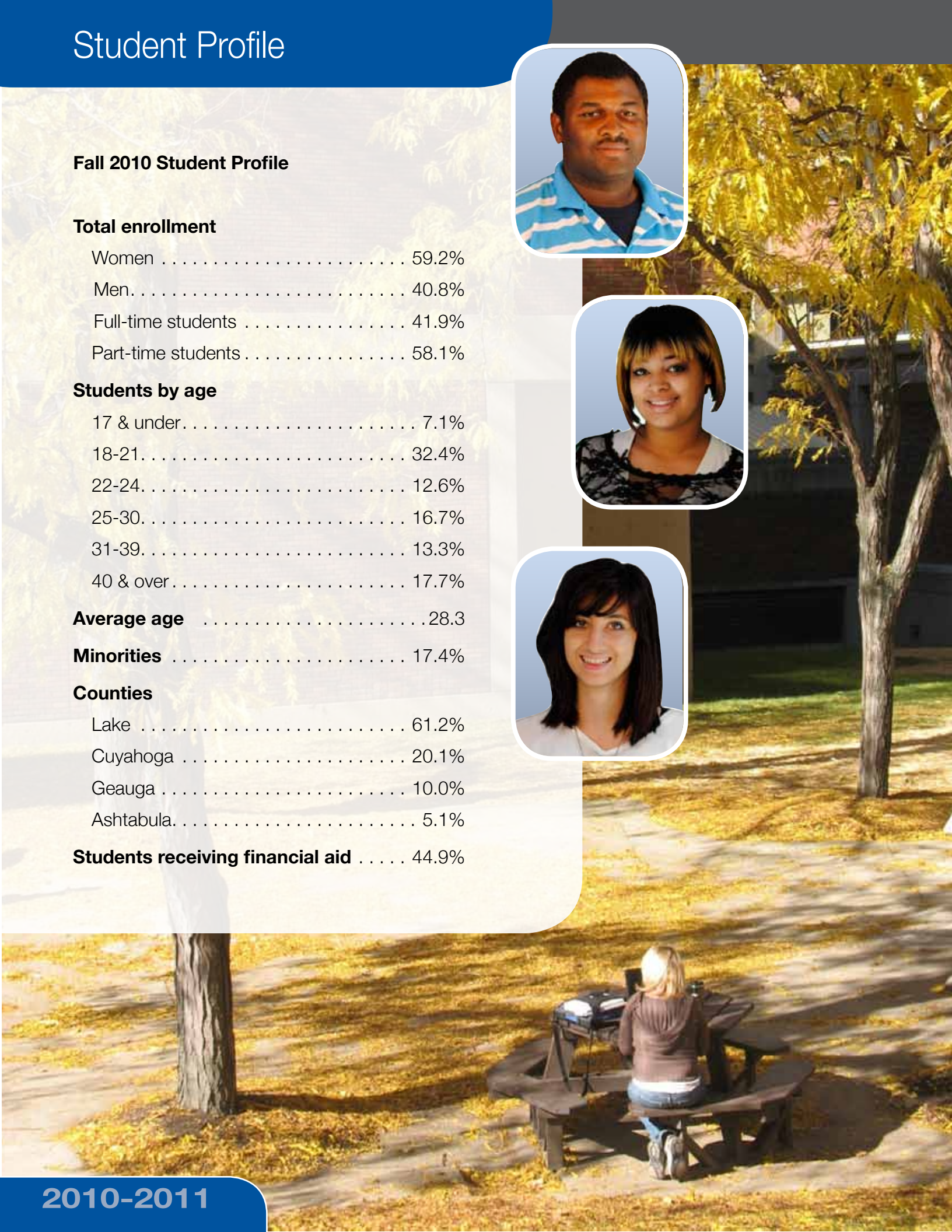
Average age 28.3

Minorities 17.4%

Counties

Lake	61.2%
Cuyahoga	20.1%
Geauga	10.0%
Ashtabula	5.1%

Students receiving financial aid 44.9%



Financial Statement

Lakeland Community College makes a significant impact on the Northeast Ohio economy. Lakeland contributes to the local economy through employee salaries, tax dollars, expenditures, and contributions to community giving campaigns. Lakeland is fiscally responsible, implementing cost controls and receiving unqualified (clean) audits year after year.

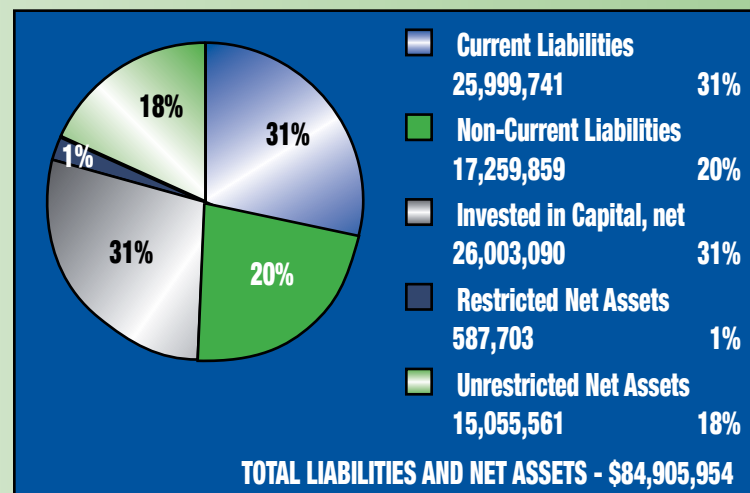
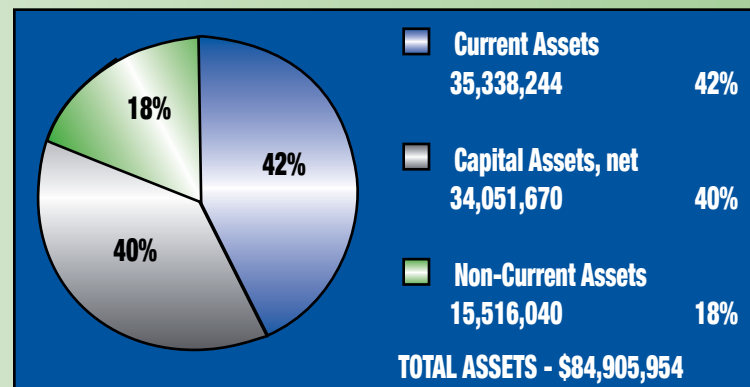
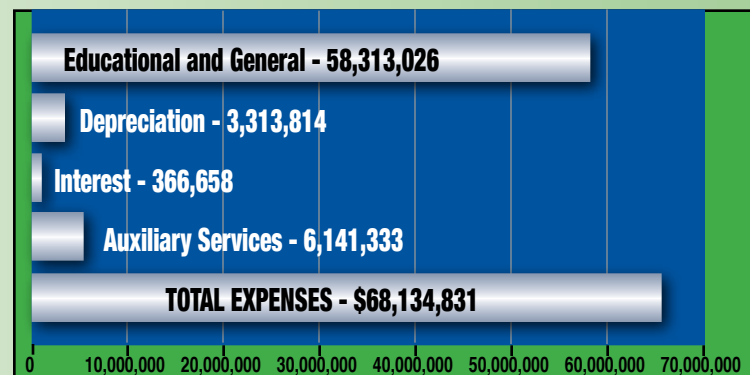
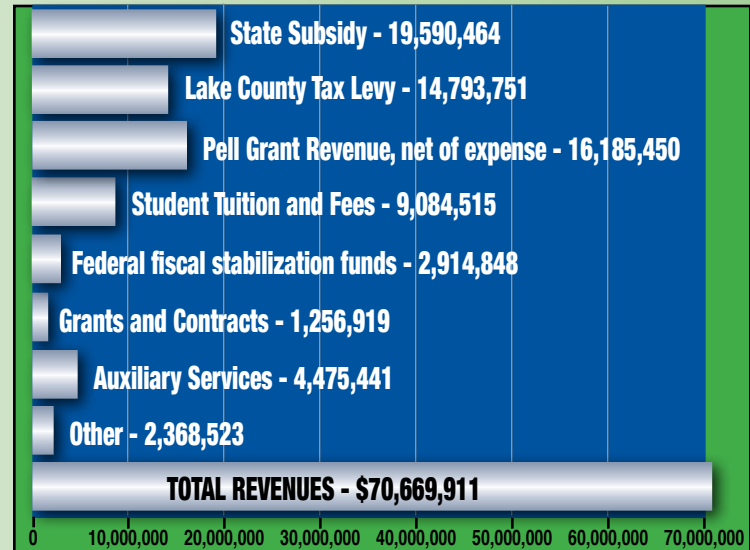
Revenues	2010	2011
State Subsidy	\$20,212,127	\$19,590,464
Lake County Tax Levy	10,599,945	14,793,751
Pell Grant Revenue, net of expense	12,782,907	16,185,450
Student Tuition & Fees	11,300,648	9,084,515
Federal fiscal stabilization funds	2,960,167	2,914,848
Grants and Contracts	728,240	1,256,919
Auxiliary Services	5,000,437	4,475,441
Other	2,729,107	2,368,523
Total Revenues	\$66,313,578	\$70,669,911

Expenses	2010	2011
Educational & General	\$56,784,825	\$58,313,026
Depreciation	3,432,257	3,313,814
Interest	368,998	366,658
Auxiliary Services	6,236,521	6,141,333
Total Expenses	\$66,822,601	\$68,134,831

Assets	2010		2011	
Current Assets	\$31,277,607	43%	\$35,338,244	42%
Capital Assets, net	35,516,812	49%	34,051,670	40%
Non-Current Assets	6,259,902	9%	15,516,040	18%
Total Assets	\$73,054,321	100%	\$84,905,954	100%

2010 Liabilities and Net Assets	2010		2011	
Current Liabilities	\$24,881,126	34%	\$25,999,741	31%
Non-Current Liabilities	9,061,921	12%	17,259,859	20%
Invested in Capital, net	25,961,813	36%	26,003,090	31%
Restricted Net Assets	974,989	1%	587,703	1%
Unrestricted Net Assets	12,174,472	17%	15,055,561	18%
Total Liabilities & Net Assets	\$73,054,321	100%	\$84,905,954	100%

Examination of the Lake County Community College District's financial statements is under the oversight of the State of Ohio Auditor, who utilizes the services of Plante & Moran, PLLC as its independent public accountants. Consistent with preceding years, the District received an unqualified (clean) audit opinion from Plante & Moran, PLLC.



Lakeland Board of Trustees



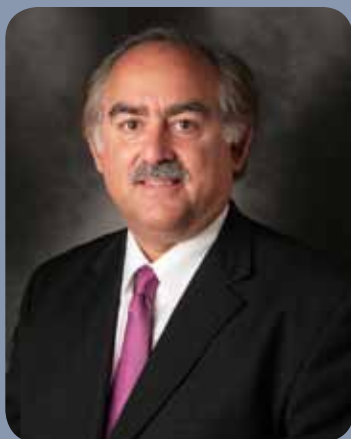
David A. Kalina
Chair
Retired International Business Manager
Burgess & Niple Architectural and
Engineering Firm



Ryan K. Callender, Esq.
Vice Chair
Attorney
Squire, Sanders and Dempsey



Kenneth M. Iwashita
Retired President
The Lubrizol Foundation,
Lubrizol Corporation



Ernest A. Lallo, Esq.
Managing Partner
Lallo & Feldman Co., L.P.A.



Kathleen T. Malec, D.A.E.
Retired Nursing Instructor



Raymond F. McGuinness
Real Estate Investor



Kip L. Molenaar
Director of Administration and Finance
City of Mentor-on-the-Lake



Kenneth J. Quiggle
Retired Business Agent
Pipefitters Local Union No. 120



Linda J. Williams, Ph.D.
Senior Director of Educational Services
WVIZ ideastream ©

The Lakeland Foundation Board of Directors

Nancy L. Guthrie, Chair
Donald J. Dailey, Vice-Chair
David E. Anderson
Thomas W. Benda
Morris W. Beverage Jr.
Ned J. Bindokas
Peter B. Clausen
Joseph A Cocozzo
Joseph C. Deak
Dennis E. Eckart
Gary M. Estadt
Dale H. Fellows
Noreen K. Goldstein
John D. Grampa
Lisa M. Habe
Ka-Pi Hoh
Richard J. Iafelice
Kenneth M. Iwashita
Richard J. Kessler
Louis S. Kreider
Ronald J. Lipin
Kathleen T. Malec
Adelbert Marous Jr.
Jerome T. Osborne III
Kenneth J. Quiggle
Mark R. Ruth
Alyson Scott
William D. Snow
Ryan P. Sommers
Jeff Sudbrook
Missia H. Vaselaney

Directors Emeriti

Arthur S. Holden Jr.
David S. Jacobson
James P. Storer
Richard L. Urbanowski

President's Cabinet

Laura Barnard, J.D.
President, Lakeland Faculty Association

Mary Ann Blakeley
Chief of Staff and Senior Vice President for
Institutional Development and Effectiveness

Marilyn Jones Ph.D.
Vice President for Learning Support and
Vice Provost

Tammy Konte
President, Lakeland Staff Association

Frederick W. Law Ph.D.
Executive Vice President and Provost and
Dean of Faculty

Stefan Magyari
Associate Vice President for
Business Services & Deputy Treasurer

Michael E. Mayher
Senior Vice President for Administrative
Services & Treasurer

Richard J. Novotny
Associate Vice President of Student
Development and Dean of Students

Dawn M. Plante
Chief Communications Officer and
Vice President for Community and
College Relations