

Lakeland

COMMUNITY COLLEGE

PROGRAM GUIDE

Applied Studies Division

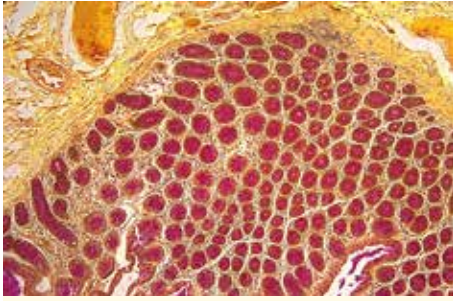
Histotechnology

- Associate of Applied Science Degree in Histotechnology

Opportunity
starts **HERE**
lakelandcc.edu



Histotechnology



A histotechnician is an individual who is trained in the preparation and staining of tissue slides for microscopic examination and disease diagnosis by the pathologist. Histotechnicians may preserve organs for later examination and perform enzyme and immunohistochemistry techniques. Histotechnicians may also assist the pathologist in the preparation of frozen tissue sections which are used to provide rapid diagnosis.

Career Opportunities

Employment in the histotechnology field is projected to grow 22 percent through 2022.

An increase in the aging population will lead to a greater need to diagnose medical conditions, such as cancer or Type 2 diabetes. Professionals in the histotechnology field fill a vital role in preparing the slides for pathologists to examine.

Motivated histotechnicians can go on to earn a bachelor's degree to become qualified to take the certification examination to work as histotechnologists.

Histotechnicians practice in numerous settings including hospitals, clinics, independent labs, research laboratories, and veterinary and forensic pathology laboratories.

The Lakeland Advantage

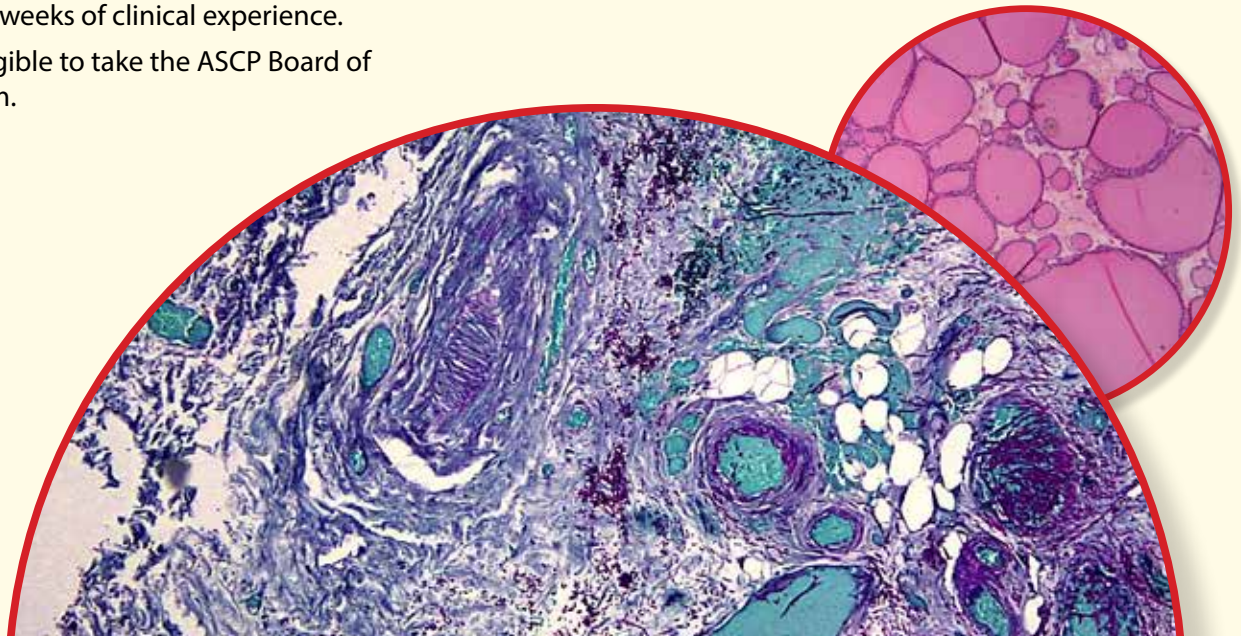
- Small class sizes allow for individual instruction.
- This is a two-year program leading to an Associate of Applied Science degree.
- Students gain 16 weeks of clinical experience.
- Graduates are eligible to take the ASCP Board of Certification exam.

Lakeland's Program

Lakeland's histotechnician program is a two-year program leading to an Associate of Applied Science degree in histotechnology. The program combines basic science, general education, laboratory techniques, and clinical laboratory experiences. Lakeland students receive personal attention from faculty currently employed in the medical field and gain hands-on training in a simulated hospital laboratory on campus. In addition, the program provides students with 480 clinical-training hours at area laboratories. Lakeland's histotechnician program is accredited by the National Accrediting Agency for Clinical Laboratory Sciences.

For more information

1.800.589.8520 • lakelandcc.edu
Karen Stiffler, MA, HTL (ASCP)
Histotechnology Program Director
440.525.7418 • kstiffler1@lakelandcc.edu



First Semester:

BIOL 2210	Anatomy and Physiology I	4
CHEM 1100	Elementary Chemistry	4
ENGL 1110*	English Composition I (A)	3
OR		
ENGL 1111	English Composition I (B)	
FYEX 1000	First Year Experience	1
HSTY 1100	Introduction to Histotechnology	4
HSTY 2100	Histology	3
		19

Second Semester:

BIOL 2220	Anatomy and Physiology II	4
HLTH 1150	Introduction to Electronic Health Records	1
HSTY 2050	Histochemistry	4
HSTY 2250	Histotechnology	3
		12

Summer:

BIOL 2700	Microbiology	4
CHEM 1150	Introduction to Organic Chemistry	4
		8

Third Semester:

ENGL 1120	English Composition II	3
HLTH 2100	Pathophysiology	3
HSTY 2151	Specialty Areas in Histotechnology	3
HSTY 2220	Theory and Practice of Immunohistochemistry	2
MATH 1330**	Statistics for the Health Sciences	3
		14

Fourth Semester:

COMM 1050***	Fundamentals of Public Speaking	2
OR		
COMM 1150	Fundamentals of Interpersonal Communication	
HSTY 2300	Histotechnician Clinical Directed Practice	6
HSTY 2400	Histotechnician Seminar	2
PSYC 1500	Introduction to Psychology	3
OR		
SOCY 1150	Principles of Sociology	
		13

Program Total: 66

*English course selection is based on placement test results (ENGL 1111 is 4 credits, only 3 credits apply to the degree).

**Students may substitute MATH 1550 Statistics. This 4 credit course may be required for students transferring to a four-year college.

***Students may substitute COMM 1100. This 3 credit course may be required for students transferring to a four-year college.

Lakeland Community College Admission Requirements

For admission into Lakeland, students must be a high school graduate or have obtained a high school diploma equivalency. Please consult Lakeland Community College's Enrollment Guide (available on Lakeland's website at lakelandcc.edu/enrollment) for specific admissions requirements and procedures.

Health Program Admission Requirements

Students must meet specific admission requirements for this program.

Listed below are requirements for admission to the Histotechnology Program:

OPTION 1: High School Option

This option is for current high school seniors or high school graduates who apply to the program within two years of high school graduation.

- Complete college application(s).
- Composite score of 21 or higher on the American College Test (ACT) or combined score of 1400 on the Scholastic Aptitude Test (SAT).
- Place into MATH 1330 Statistics for the Health Sciences or higher or pass MATH 0850 Intermediate Algebra.
- Complete high school algebra, chemistry, and biology with a "C" grade or higher.
- An overall high school GPA of 2.5 on a 4.0 scale or equivalent.
- Meet with the program director and counselor to review program prerequisites and requirements.

Upon successful completion of the above criteria, the applicant will be admitted into the program. Students must complete HLTH 1215 (Medical Terminology for Health Professionals) with a "C" grade or higher prior to enrolling in their first health technology course.

OPTION 2: College Option

This option is for students who do not qualify for admission under Option 1.

- Complete college application(s).
- Submit high school transcript as well as any college transcript(s).
- Successful passing score on the required program pre-admission test.
- Meet with a counselor to review program prerequisites and requirements.
- Students must have a cumulative GPA of 2.0 or higher in program applicable courses. The following courses, or equivalent courses from other regionally accredited colleges, must be completed with a combined minimum cumulative GPA of 2.5 or higher and a "C" grade or higher.
 - HLTH 1215 Medical Terminology for Health Professionals
 - BIOL 2210 Anatomy & Physiology I

NOTE: Students must meet one of these requirements to take BIOL 2210 with a "C" or higher:

1. High school biology within last five years and high school chemistry.
2. High school biology within last five years and CHEM 1100 Elementary Chemistry.
3. Biology 1200 Fundamentals of Biology for the Health Technologies.

Students are required to take the Math Placement Test and be placed into MATH 1330 or complete MATH 0850 with a "C" grade or higher.

OPTION 3: Advanced Education Option

Students pursuing this option must have an Associate of Applied Science Degree in Nursing or Allied Health, Bachelor of Science Degree in a natural science, or an Associate of Science Degree to be waived from the preadmission testing. All other Option 2 requirements apply.

Students must meet specific admission requirements for this program.

Histotechnology

To further your education, Lakeland's Holden University Center offers a variety of bachelor's degree programs from a number of four-year colleges and universities offering you the opportunity to *stay here and go far!* Visit lakelandcc.edu/uc to explore your options.



Curriculum and program requirements are subject to change. Find the most up-to-date information in the college catalog, available on the website at lakelandcc.edu.



Quality Education

Lakeland prepares you for a high-demand career or for transfer to a four-year college or university. Professors at Lakeland are experts in their fields with real-world experience. Small class sizes allow for personalized attention.



Affordable Tuition

Save thousands on your college education. Lakeland's tuition is about one-third the cost of most four-year schools. Financial assistance is available, including federal and state grants, scholarships, loans, and work study employment.



Convenience

Lakeland offers convenient day, evening and weekend class times, and a growing number of online courses. The main campus in Kirtland is only 20 miles northeast of Cleveland. Classes are also offered in Madison.



Focus on Students

Lakeland offers a variety of student services to help you succeed, such as counseling, tutoring, wireless computer labs, career services, free parking, and affordable child care.



Accreditation

Lakeland Community College is accredited through the Higher Learning Commission (HLC) and participates in the Academic Quality Improvement Program (AQIP). The Higher Learning Commission, 230 South LaSalle Street, Suite 7-500, Chicago, IL 60604-1413, phone: 800.621.7440, www.hlcommission.org.

Lakeland
COMMUNITY COLLEGE